

DOWNTOWN DEERFIELD

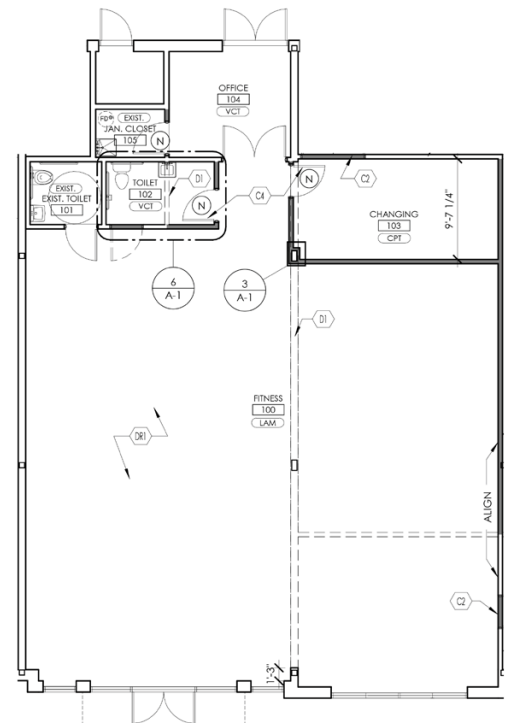
FOR LEASE: 710 Robert York Ave, Unit C · Deerfield, IL



2,554 SQUARE FEET AVAILABLE

The Shops at Deerfield Square

- Take advantage of the best rental rates within The Shops at Deerfield Square
- More than 45 feet of retail frontage
- Ample parking immediately in front of the space
- Join Core Power Yoga, Eisen Orthodontics, and React Physical Therapy within 710 Robert York Avenue
- Great traffic from the car wash, restaurants, office building, and the Deerfield Post Office
- Located one block from the Deerfield Metra Station and 1.5 miles to I-294/I-94



FOR EXCLUSIVE LEASING INFORMATION PLEASE CONTACT:

Chris Siavelis
csiavelis@crmproperties.com

Jeffrey Malk
jmalk@crmproperties.com

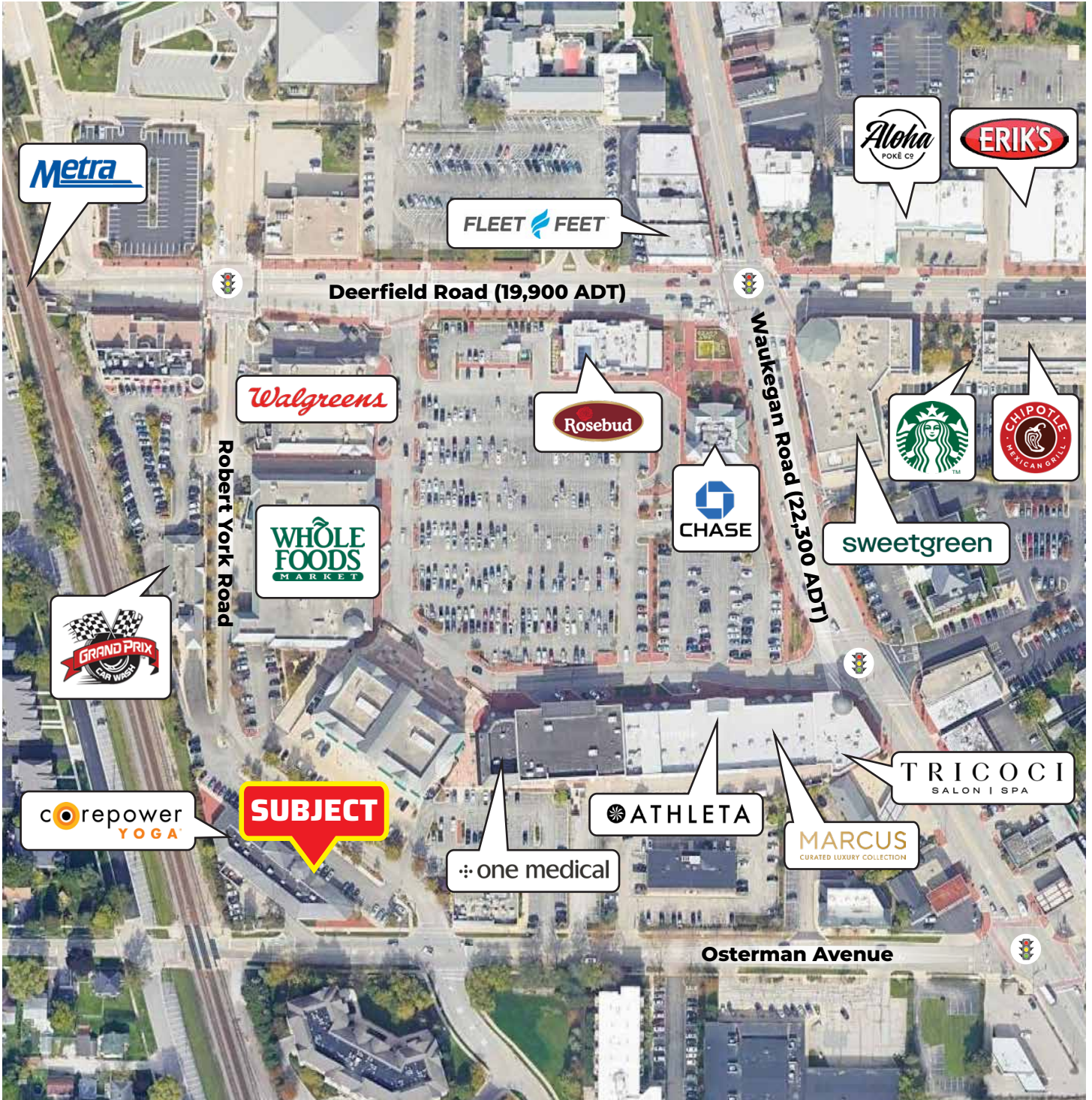


847-948-6500

All information contained herein is deemed reliable but is subject to errors, omissions, change in status or withdrawal without notice

DOWNTOWN DEERFIELD

FOR LEASE: 710 Robert York Ave, Unit C · Deerfield, IL



FOR EXCLUSIVE LEASING INFORMATION PLEASE CONTACT:

Chris Siavelis
csiavelis@crmproperties.com

Jeffrey Malk
jmalk@crmproperties.com

847-948-6500



All information contained herein is deemed reliable but is subject to errors, omissions, change in status or withdrawal without notice